

The Clover-Leaf Bed Room Set

for The Young Girl Who Believes in Luck

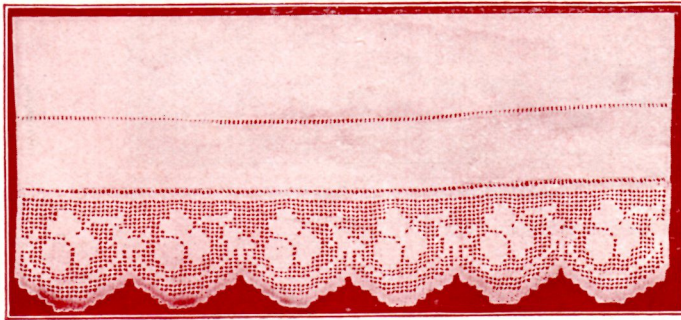


PLATE 71
PILLOW CASE AND SCARF END

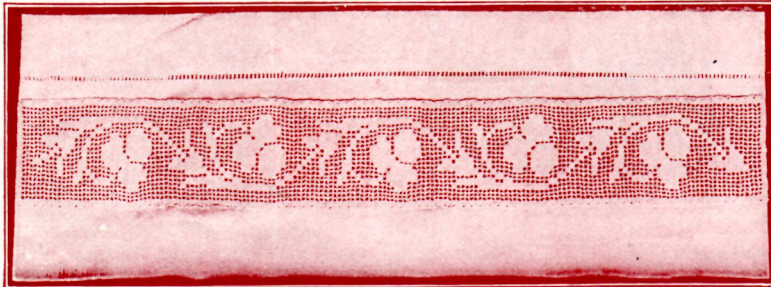


PLATE 72
INSERTION FOR TOWEL, ALSO USEFUL FOR
SHEETS AND CURTAINS



PLATE 73
DRESSER SCARF AND PIN CUSHION

DIRECTIONS FOR CLOVER-LEAF EDGE

Ch 62.

1st Row—19 bl, then follow design, adding blks at lower edge to form scallop.

DIRECTIONS FOR CLOVER-LEAF INSERTION.

MATERIALS—Coats Mercerized Crochet, No. 80.

Ch 72.

1st Row—23 bl.

2d, 3d AND 4th Rows—1 bl, 21 sp, 1 bl, then follow design.

DIRECTIONS FOR CLOVER-LEAF PIN CUSHION AND EDGE FOR SAME

MATERIALS—Coats Mercerized Crochet, No. 80.

Ch 182.

1st FOUR Rows—Each 59 sp, then follow design.

EDGE

Fasten in top of tr.

1st Row—Ch 3, s st in next tr, * ch 1, tr in 2d sp. Repeat from * 5 times. Ch 3 s st in 2d tr, ch 3, s st in next tr. Repeat all around.

2d Row—* Ch 2, tr over tr. Repeat from * 5 times. Ch 2, 1 dc over center s st. Repeat.

3d Row—* Ch 5, 1 s st in next sp. Repeat from *.

Working Patterns for the Clover-Leaf Set

PARTLY ILLUSTRATED ON PAGE 18.

Plates 75 and 77 are for use as corners and inserts, for pieces to match the Violet Insertion and Edge, Plates 43 and 53, on Pages 12 and 13.

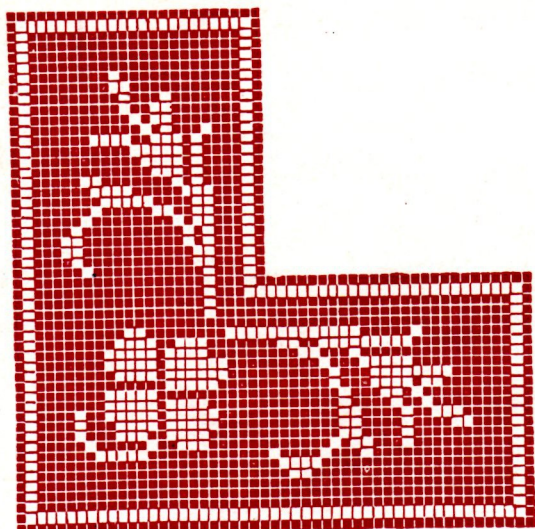


PLATE 74

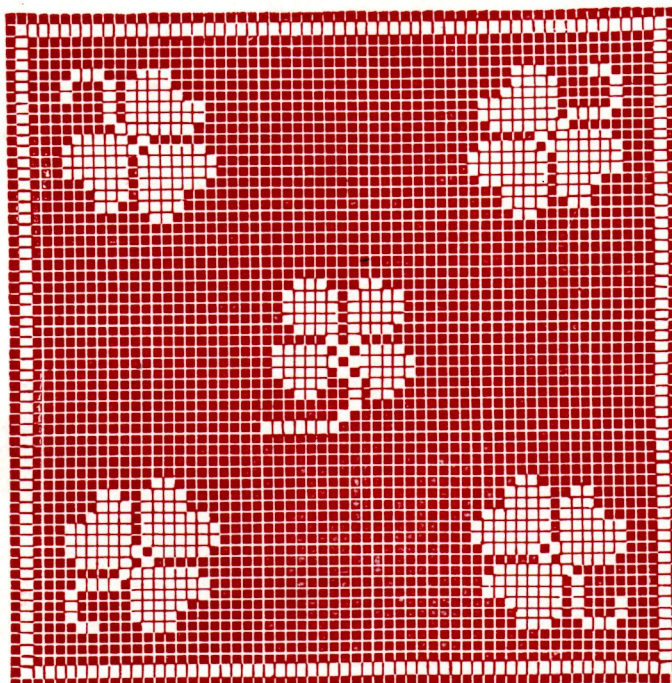


PLATE 75

NOTE—These plates carry a solid mesh edge (instead of open mesh edge, as the finished pieces and directions show). This to suggest to worker that a change can easily be made in their use, if desired.

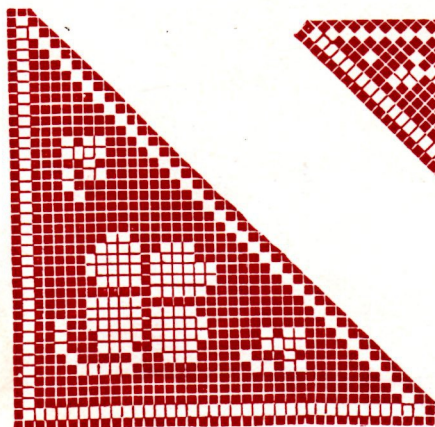


PLATE 76

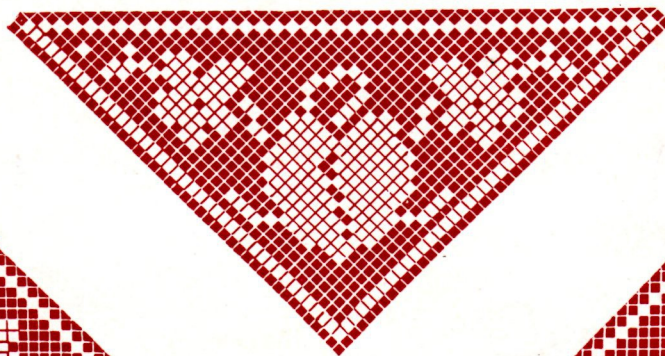


PLATE 77

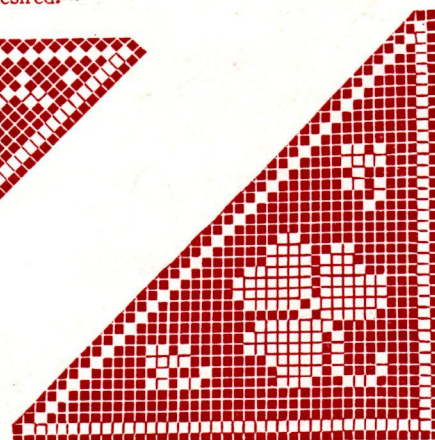


PLATE 78

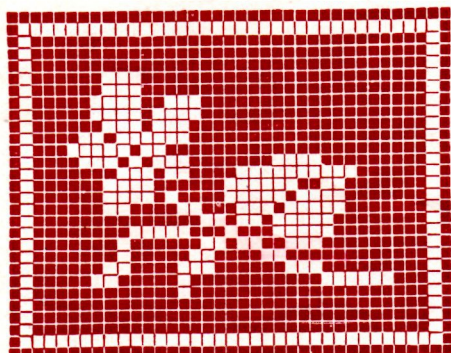


PLATE 79

DIRECTIONS FOR CLOVER LEAF CORNER IN DRESSER-COVER

MATERIALS—Coats Mercerized Crochet, No. 80.

Ch 74.

1ST 4 ROWS—Each 23 sp, then follow design. After the 25th row, add a ch of 80, on which make 25 sp, then complete the design.

EDGE—3 s st in each sp all around.

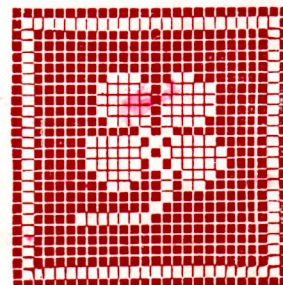


PLATE 80