



Stained Glass

No. 7004

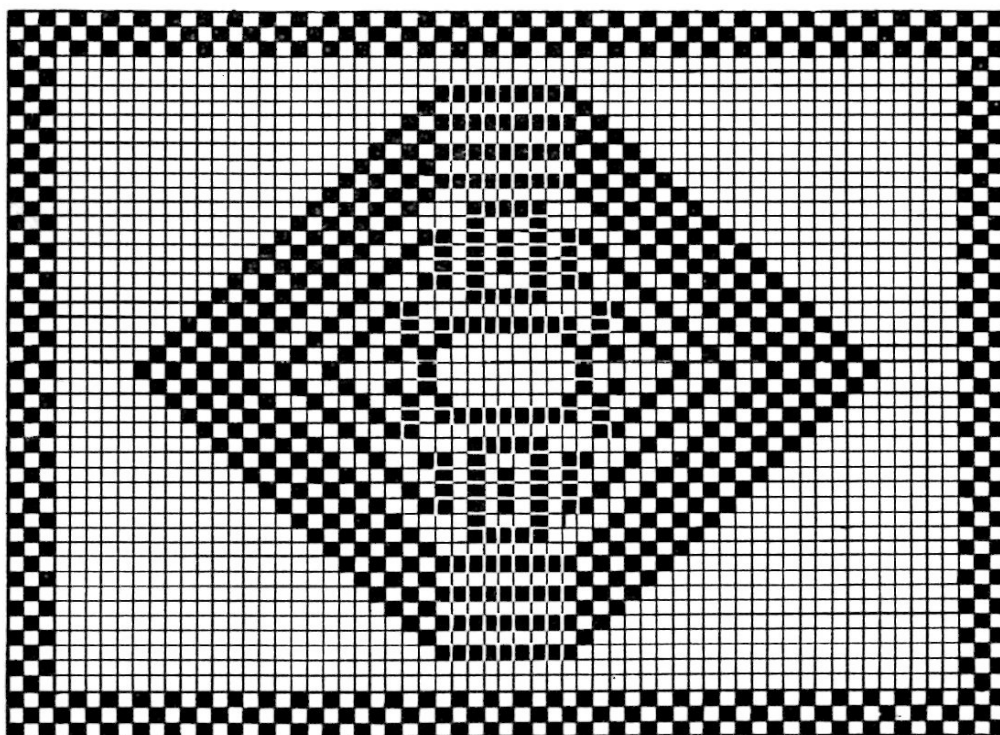
Materials: Clark's O.N.T. (8 balls) or J. & P. Coats (6 balls) Mercerized Crochet, size 30, White or Ecru; or Clark's Big Ball Mercerized Crochet, 3 balls. Milward's steel crochet hook No. 10.

When completed, chair back measures about $15\frac{1}{2}$ x $18\frac{1}{2}$ inches, and each arm piece about 8 x 12 inches.

Chair Back. Beginning at bottom of chart, ch 264, to measure about $19\frac{1}{2}$ inches, turn. **1st row:** D c in 4th ch from hook, d c in each of next 2 ch, * ch 2, skip 2 ch, d c in each of next 4 ch, repeat from * across, ending with a block of 4-d c (44 bls). Ch 5, turn. **2nd row:** Skip next 2 d c of 1st bl, * d c in last d c of same bl, 2 d c in next sp, d c in 1st d c of next bl, ch 2, skip next 2 d c of same bl, repeat

from * across, ending row with ch 2, d c in turning ch of previous row. Ch 3, turn. **3rd row:** 2 d c in 1st sp, * d c in 1st d c of next bl, ch 2, skip next 2 d c, d c in last d c of same bl, 2 d c in next sp, repeat from * across, ending row with 2 d c in last sp, d c in turning ch. Ch 5, turn. **4th row:** Skip 2 d c, d c in last d c of same bl, 2 d c in next sp, d c in 1st d c of next bl, * ch 2, skip 2 d c, d c in last d c of same bl, ch 2, skip 2 ch, d c in next d c, repeat from * across, ending row with 1 bl, 1 sp. Ch 3, turn. **5th row:** Make 1 bl, 1 sp, 1 bl, sp over each of remaining sps across, ending row with 1 bl, 1 sp, 1 bl. Ch 5, turn. **6th row:** 1 sp, 1 bl, 25 sps, 33 bls, 25 sps, 1 bl, 1 sp. Ch 3, turn. Hereafter follow chart up to center. Then work by reversing pattern for the other half.

Arm Piece. Beginning at bottom of chart, ch 192 to measure about $12\frac{1}{2}$ inches, turn and work as for chair back following chart for the arm piece. Make another arm piece same as this.

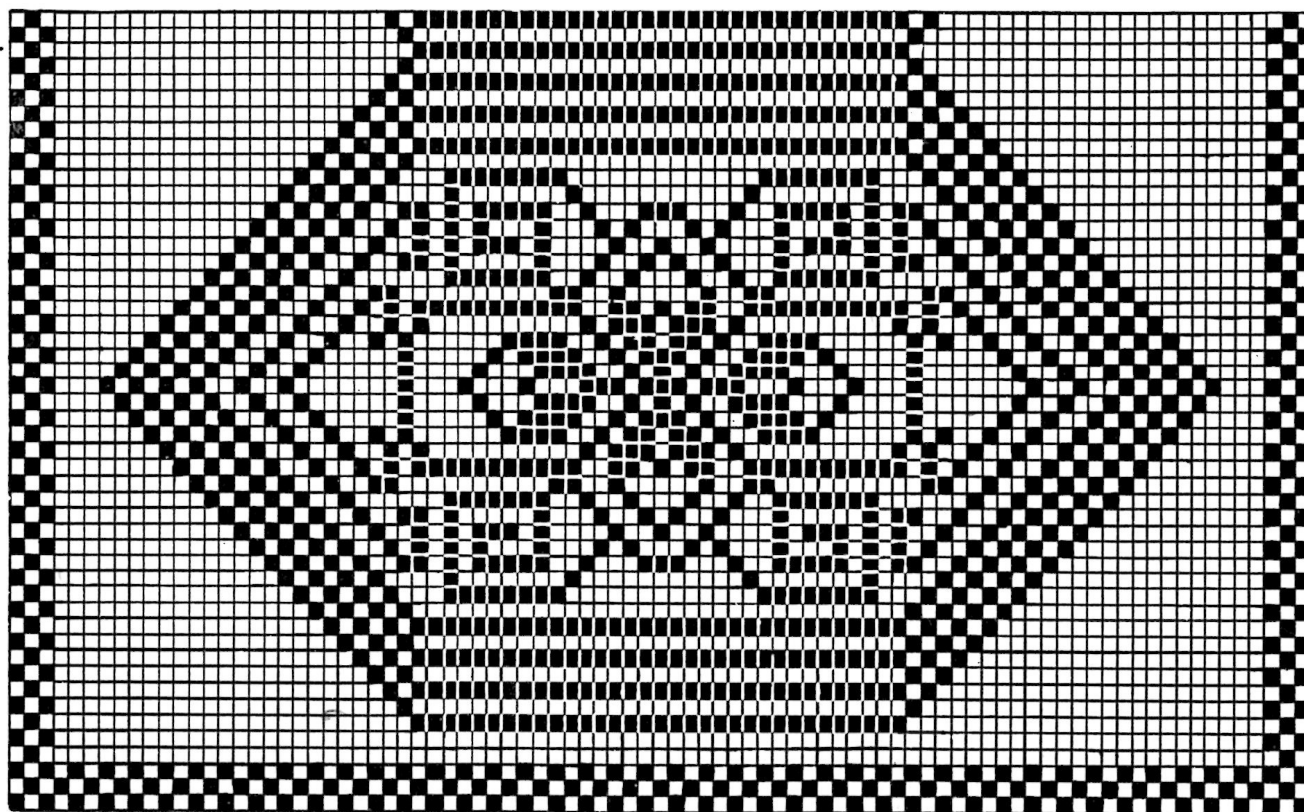


Begin here with ch 192

ARM PIECE

CHAIR BACK

Center—



Begin here with ch 264