



stop and go mittens

style no. 6904

shown on page 5

Directions are for size 2-4 years

materials: Brunswick Germantown Knitting Worsted or Windrush[®], 1 oz. each Green and Red and small amount of White yarn for embroidery. 1 set double pointed needles No. 4.

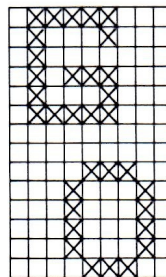
Gauge: 6 sts = 1".

Cuff: Cast on and divide on 3 needles 32 sts. Join. Work k 2, p 2 ribbing for 2". Dec 1 st in next round. 31 sts. **Hand:** Knit even for 3 rounds. **For Thumb:** Inc 1 st in first st, k 1, inc 1 st in next st, knit to end of round. 33 sts. Knit 2 rounds even. **2nd Inc Round:** Inc 1 st in first st, k 3, inc 1 st in next st, knit to end of round. Continue to inc in first and last thumb sts every 3rd round 2 times. 39 sts. Knit 2 rounds even. Place 11 thumb sts on a holder. At end of round cast on 2 sts, 30 sts in all. Work even until entire work measures 6" or it is desired length, dec 2 sts in last round. **1st Decreasing Round:** K 2 tog every 3rd and 4th sts 7 times. Knit 1 round even. **2nd Decreasing Round:** K 2 tog every 2nd and 3rd sts 7 times. Knit 1 round even. **Next Round:** K 2 tog in succession 7 times. Break off leaving a length of yarn. Draw this through all the remaining sts and fasten off securely.

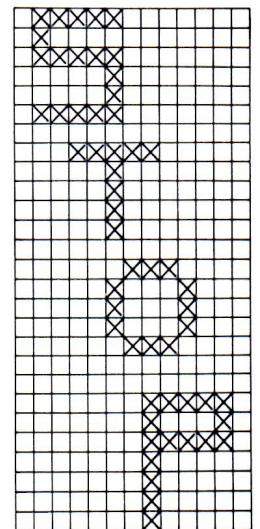
thumb: Place thumb sts from holder onto 2 needles. With 3rd needle, pick up and knit the 2 cast on sts. K until thumb measures 1 1/2", decreasing 1 st in last round, * k 1, k 2 tog, repeat from *. Knit 1 round even. K 2 tog all around. Finish as for end of mitten. Make one red mitten and one green mitten.

Embroider in duplicate stitch STOP on back of red mitten and GO on back of green mitten. See chart. **Duplicate Stitch:** Using a tapestry needle and White yarn, bring needle through the center of st, * slip the needle horizontally from right to left on each side of the same st on the row below, slip from right to left in the st from where you started, emerging from the next st. Continue in this manner until all sts have been made.

Duplicate stitch pattern



For green mitten



For red mitten