

MATERIALS:

J. & P. COATS KNIT-CRO-SHEEN

SINGLE SIZE

26 balls of White or Ecreu,
or 42 balls of any color.

DOUBLE SIZE

37 balls of White or Ecreu,
or 59 balls of any color.

OR

CLARK'S O.N.T. MERCERIZED BEDSPREAD COTTON

SINGLE SIZE

26 balls of White or Ecreu.

DOUBLE SIZE

37 balls of White or Ecreu.

Steel crochet hook No. 7 or 8.

GAUGE: 3 sps make $1\frac{1}{4}$ inches; 3 rnds make $1\frac{1}{4}$ inches. Each block measures about $17\frac{1}{2}$ inches after blocking. For a single size spread about 72 x 108 inches including edging, make 4 x 6 blocks. For a double size spread about 90 x 108 inches including edging, make 5 x 6 blocks.



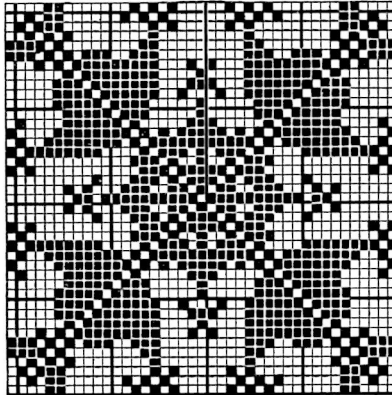
Mayfair

No. 6102

BLOCK . . . Starting at center, ch 11, join with sl st to form ring. **1st rnd:** Ch 4 (to count as tr), 4 tr in ring, (ch 7, 5 tr in ring) 3 times; ch 7. Join with sl st to top of ch-4. **2nd rnd:** Ch 4, tr in next 4 tr, * 4 tr in next sp, ch 7, 4 tr in same sp, tr in next 5 tr. Repeat from * around. Join. **3rd rnd:** Ch 4, tr in 8 tr, * 4 tr in next sp, ch 7, 4 tr in same sp, tr in next 13 tr. Repeat from * around. Join. **4th rnd:** Ch 4, tr in 4 tr, * (ch 3, skip 3 tr, tr in next tr) twice; in corner sp make 4 tr, ch 7 and 4 tr; tr in next tr, (ch 3, skip 3 tr, tr in next tr) twice; tr in next 4 tr. Repeat from * around. Join. **5th rnd:** Ch 4, tr in 4 tr, * ch 3, tr in next tr, 3 tr in next sp, tr in next 5 tr, in corner sp make

4 tr, ch 7 and 4 tr, tr in 5 tr, 3 tr in next sp, tr in next tr, ch 3, tr in next tr, tr in next 4 tr. Repeat from * around. Join. **6th to 20th rnds incl:** Work in this manner following chart, making ch-3 for sps and ch-7 for corner sps, and joining each rnd with a sl st. The heavy line on chart shows where each rnd begins. At end of 20th rnd, join and fasten off. Make necessary number of blocks and sew together on wrong side with neat over-and-over sts.

EDGING . . . Attach thread, ch 4 and work 3 rnds of tr making corners as on blocks, being careful edging does not ruffle. Fasten off. Block to measurements given.



There are 10 spaces
between heavy lines

Smart Crochet Ways to Make Your Bed

Try your bedspread over a petticoat flounce of stiffly starched muslin or chintz—it sets it off beautifully!

Or have it long, falling to the floor in graceful length, aided and abetted by deep fringe or hand knotted tassels.

A grand foil for a handsome spread is a footless bed, for the spread swoops down luxuriously to show off the lovely design.