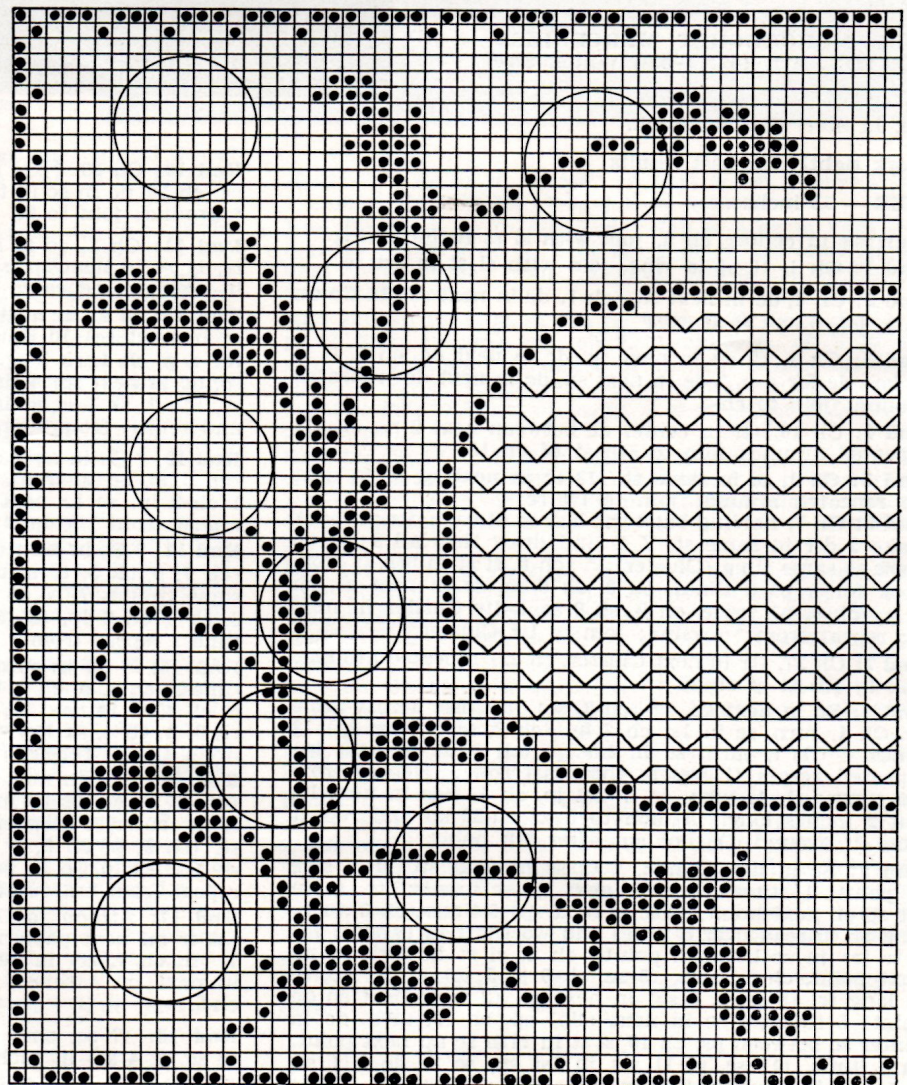


Embossed Daisy

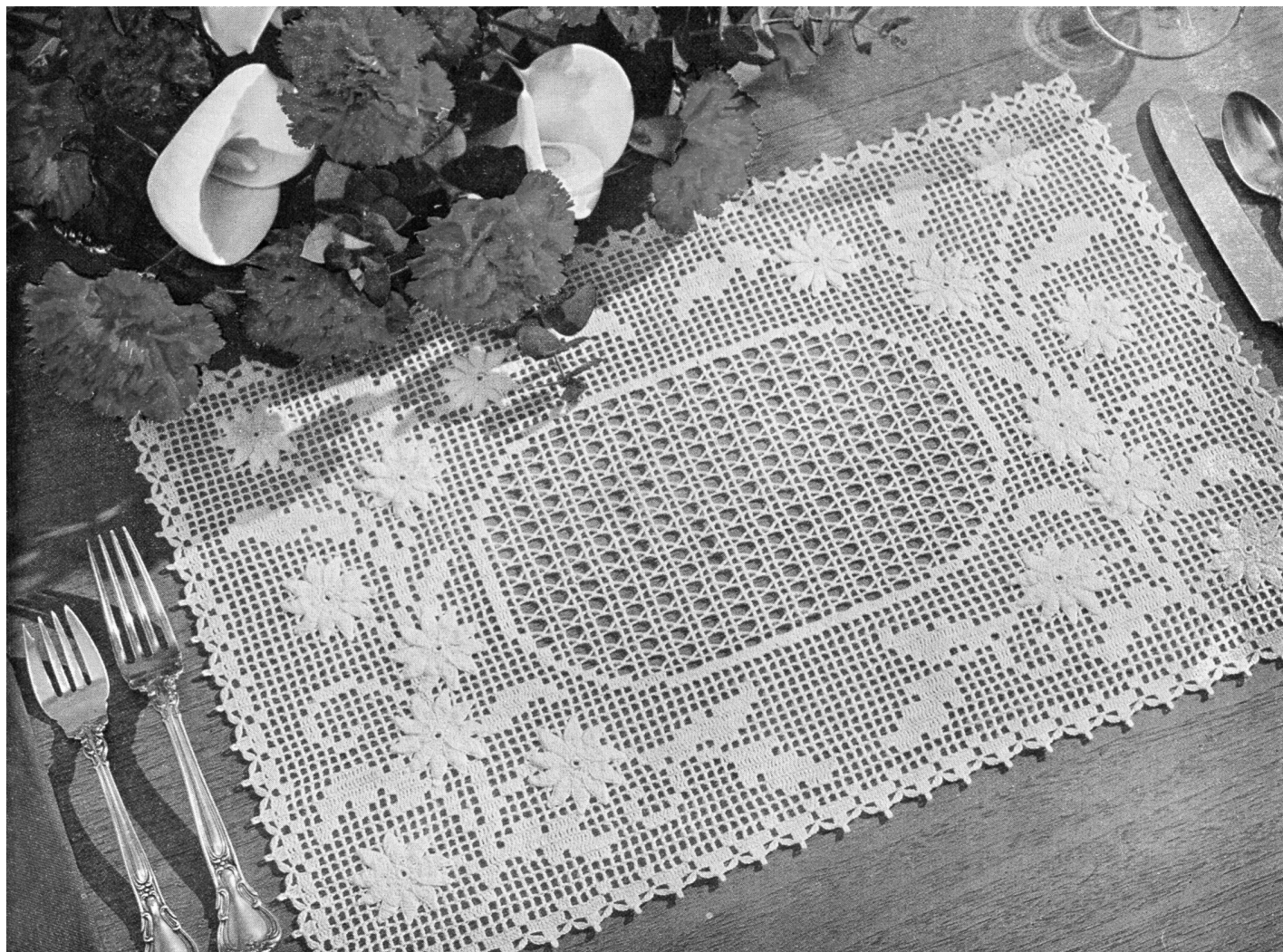


PLACE MAT



PLACE MAT

↑
CENTER



DAISY MERCERIZED CROCHET COTTON, Art. 65: 1 skein White, Size 30; or

LILY MERCERIZED CROCHET COTTON, Art. 36: 1 ball White, Size 30; or

LILY MERCERIZED CROCHET COTTON, Art. 161: 2 balls White, Size 30.

No. 13 Steel Crochet Hook.

SIZE — 12 x 18 inches.

Gauge — 6 sps - 1 inch; 6 rows - 1 inch.

Ch 313.

Row 1: Starting at bottom edge, sk 4 ch, dc in next 3 ch, (ch 2, sk 2 ch, dc in next 10 ch) 25 times, ch 2, sk 2 ch, dc in 4 end ch. Mark right side of this row as right side of Mat.

Row 2: Ch 5, turn, sk 3 dc, dc in next dc, * 2 dc in next sp, dc in next dc, (ch 2, sk 2 dc, dc in next dc) 3 times; repeat from * across; end with ch 2, dc in end ch-3.

Row 3: Ch 3, turn, 2 dc in 1st sp, dc in next dc, make sps across, 2 dc in end sp, dc in 3d (center) st of same sp. Follow Chart thru Row 18.

Row 19: Ch 3, turn, 1 blk, 3 sps, 8 blks, 5 sps, 1 blk, 1 sp, 1 blk, 15 sps, 3 blks and 2 sps; (ch 5, sk 5 dc, dc in next dc, ch 2, sk 2 dc, dc in next dc) 8 times, 1 sp, 3 blks and complete row as in Chart.

Row 20: Ch 3, turn, 1 blk, 4 sps, 5 blks, 1 sp, 1 blk, 5 sps, 1 blk, 2 sps, 3 blks, 10 sps, 2 blks and 2 sps; ch 3, sk 2 dc, sc in next dc, ch 3, dc in next dc (Lacet St),

ch 2, dc in next dc, (ch 3, sc in next ch-5 sp, ch 3, dc in next dc, ch 2, dc in next dc) 8 times, ch 3, sc in next dc, ch 3, sk 2 dc, dc in next dc, 2 sps, 2 blks and follow Chart across.

Row 21: Ch 3, turn, 1 blk 5 sps, 3 blks, 8 sps, 1 blk, 3 sps, 4 blks, 2 sps, 2 blks, 3 sps, 1 blk and 1 sp; ch 5, sk next sp, dc in next dc, ch 2, dc in next dc, (ch 5, dc in next dc, ch 2, dc in next dc) 10 times, ch 5, sk 3 dc, dc in next dc, 1 sp, 1 blk and follow Chart across. Continue, following Chart to top (Row 67).

Edge: Ch 4, 3 dc in side-top of last dc, * ch 4, dc in 4th ch from hook, sc in next ch-2 sp, ch 4, dc in 4th ch from hook, dc between next 2 blks, dc in bar of next blk, ch 5, sl st in last dc for a p, dc in bar of same blk, dc between blks; repeat from * across to corner. In corner st make 4 dc, p and 3 dc. (Ch 4, dc in 4th ch from hook, sc in next sp, ch 4, dc in 4th ch from hook, sk 3 dc, dc in next 2 dc, p, dc in next 2 dc) repeated across; in corner st make 4 dc, p and 3 dc; repeat from * around. End with 3 dc in 1st corner, join to ch-4, p. Fasten off.

DAISY: Ch 7, join with sl st to form ring. Ch 1, 10 sc in ring, join. * Ch 14, sk 2 ch, sc in next 2 ch, hdc in next ch, dc in next 2 ch, tr in next ch, (tr in next 2 ch) worked off tog into a Cluster-dec, on bal. of chain make 1 tr, 1 dc, 1 hdc and 1 sc; sl st in next sc on ring. Repeat from * 9 times (10 petals). Join and fasten off. Make 16. Sew 8 on each end of Mat (see circles on Chart). Stretch and pin Mat right-side-down in true shape. Steam and press dry thru a cloth.