

# Highland Fling...

Place Mats with a Tartan flavor . . .  
gay and informal . . . Hot Platter Mats  
to protect your furniture . . . practical Pot Holders . . . all are easy to make with  
J. & P. COATS "Knit-Cro-Seen" or CLARK'S O.N.T. Bedspread Cotton.

S-90  
Directions on Page 10

S-88  
Directions on Page 10

S-87  
Directions on Page 10



S-91  
Directions on Page 11

S-89  
Directions on Page 11







## Tartan Place Mats and Pot Holder S-87

### MATERIALS:

J. & P. Coats "Knit-Cro-Sheen," Art. A.64, 7 balls of No. 9 Yellow; 5 balls of No. 12 Black and 1 ball of No. 126 Spanish Red; or

Clark's O.N.T. Mercerized Bedspread Cotton, Art. B.504, colors of your own choice; or

J. & P. Coats or Clark's O.N.T. Pearl Cotton, Art. A. or B.19, Size 5, 24 balls of No. 43 Dk. Yellow; 18 balls of No. 12 Black and 6 balls of No. 126 Spanish Red.

Milwards Steel Crochet Hook No. 7.  
2/3 yard red felt lining.

Place Mat measures 11 x 18½ inches  
including fringe

**PLACE MAT or HOT PLATTER MAT . . .** Starting at narrow edge with Dk. Yellow, ch 102 to measure 12 inches. **1st row:** Dc in 6th ch from hook, \* ch 1, skip 1 ch, dc in next ch. Repeat from \* across. Ch 4, turn (49 sps). **2nd and 3rd rows:** Skip first dc, \* dc in next dc, ch 1. Repeat from \* across, skip 1 ch of last sp, dc in next ch. Ch 4, turn. Break off at end of 3rd row. Turn. **4th row:** Attach Spanish Red to first dc, ch 4, \* dc in next dc, ch 1. Repeat from \* across, ending as before. Break off and turn. **5th, 6th and 7th rows:** Attach Yellow and work in pattern. Break off at end of 7th row. **8th to 15th rows incl:** Make 2 rows of Black, 1 Yellow, 2 Black, 1 Yellow, 2 Black. The 1st to 15th rows establish color pattern. Repeat these colors until 67 rows are completed, ending with 7th row.

**WEAVING . . .** Cut 8 strands of Yellow each 24 inches long. Weave these strands through first row of sps on long side of mat. Make a knot at each end, leaving enough free for fringe. Make 3 more Yellow stripes, 1 Red, 4 Yellow, 3 Black, 1 Yellow, 3 Black, 1 Yellow, 3 Black. Repeat these 20 stripes until all sps have been filled. Trim fringe evenly on both ends. Cut a piece of felt slightly smaller than mat. Sew in place for lining.

**POT HOLDER . . .** Starting at bottom with Black, ch 74. **1st row:** Repeat 1st row of Place Mat. Break off (35 sps). **2nd, 3rd and 4th rows:** Attach Yellow and work in pattern. Break off at end of 4th row. Work in color pattern as for Place Mat until 24 rows are completed, ending with a Black row. Break off.

Cut 8 strands of Black, 12 inches

long. Weave through 1st row of sps on long side of pot holder. Knot ends for fringe as before. Make 2 more Black stripes, 4 Yellow, 1 Red, 4 Yellow, 3 Black, 1 Yellow, 3 Black, 1 Yellow, 3 Black, 1 Yellow, 3 Black, 1 Yellow, 3 Black. Trim fringe evenly. Line as for Place Mat. With Red sc closely around bone ring. Join and break off. Sew in place on pot holder.

## Tartan . . . S-88

### MATERIALS:

J. & P. Coats "Knit-Cro-Sheen," Art. A.64, 1 ball each of No. 48 Hunter's Green, No. 68 Skipper Blue and No. 12 Black and a few yards of No. 126 Spanish Red and No. 1 White; or

Clark's O.N.T. Mercerized Bedspread Cotton, Art. B.504, colors of your own choice; or

J. & P. Coats or Clark's O.N.T. Pearl Cotton, Art. A. or B.19, Size 5, 4 balls each of No. 48 Hunter's Green, No. 108 Steel Blue and No. 12 Black and a few yards of No. 126 Spanish Red and No. 1 White.

Milwards Steel Crochet Hook No. 7.

An 8-inch square of green felt.

A bone ring.

Starting at A on chart with Hunter's Green, ch 70. **1st row:** Sc in 2nd ch from hook, insert hook in next ch, draw loop through, drop Green, pick up Black and draw through remaining 2 loops on hook, thus changing color (always change color in this manner); working over unused color in order to conceal it, sc in next 2 ch, \* drop

Black, pick up Green, sc in next 5 ch, drop Green, pick up Black, sc in next 2 ch. Repeat from \* across, ending with 2 Green sc. Ch 1, turn. Starting with 2nd row follow chart to C. Follow chart from B to C 2 more times, then follow chart from B back to A. Break off.

Embroider White cross lines in chain st through center of Green sections and Spanish Red through center of Blue sections. Cut felt lining to size and sew in place. With Hunter's Green, sc closely around bone ring. Join and break off. Sew to corner.

## Tartan . . . S-90

### MATERIALS:

J. & P. Coats "Knit-Cro-Sheen," Art. A.64, 1 ball each of No. 68 Skipper Blue and No. 126 Spanish Red and a few yards of No. 1 White; or

Clark's O.N.T. Mercerized Bedspread Cotton, Art. B.504, colors of your own choice; or

J. & P. Coats or Clark's O.N.T. Pearl Cotton, Art. A. or B.19, 4 balls each of No. 68 Skipper Blue and No. 126 Spanish Red and a few yards of White.

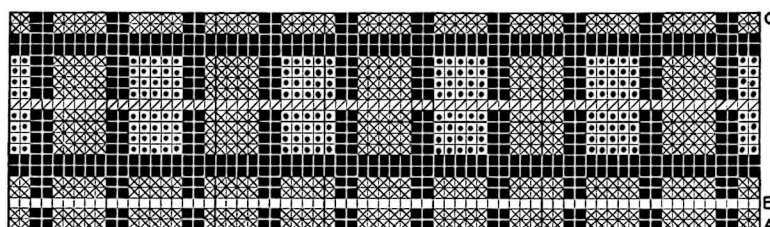
Milwards Steel Crochet Hook No. 7.

An 8-inch square of blue felt.

A bone ring.

Starting at A on chart with Spanish Red, ch 78. **1st row:** Sc in 2nd ch from hook and in next 7 ch, insert hook in next ch, draw loop through, \* drop Red, pick up Skipper Blue, draw through remaining 2 loops on

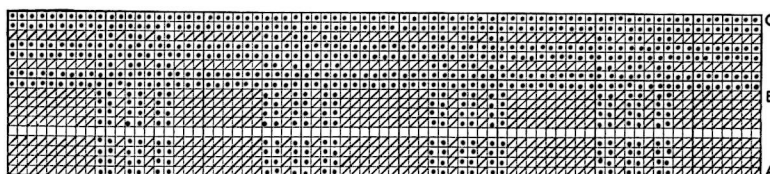
*Continued on page 11*



■ BLACK ■ HUNTER'S GREEN ■ SKIPPER BLUE ■ SPANISH RED □ WHITE

Chart for Tartan Pot Holder S-88

Chart for Tartan Pot Holder S-90



■ SKIPPER BLUE ■ SPANISH RED □ WHITE

## S-90 *Continued from page 10*

hook, thus changing color (always change color in this manner); working over unused color make sc in next 2 ch, (drop Blue, pick up Red, sc in next ch, drop Red, pick up Blue, sc in next 2 ch) twice; drop Blue, pick up Red, sc in next 9 ch. Repeat from \* across. Ch 1, turn. Starting with 2nd row follow chart to C. Repeat chart from A to C 3 more times, then follow chart from B back to A. Break off.

Embroider White cross lines in chain st through center of each Red section. Line with felt. With Red sc closely around bone ring. Join and break off. Sew to corner.

## Tartan . . . S-89

### MATERIALS:

J. & P. Coats "Knit-Cro-Sheen," Art. A.64, 1 ball each of No. 48 Hunter's Green and No. 12 Black and a few yards of No. 126 Spanish Red and No. 1 White; or

Clark's O.N.T. Mercerized Bedspread Cotton, Art. B.504, colors of your own choice; or

J. & P. Coats or Clark's O.N.T. Pearl Cotton, Art. A. or B.19, Size 5, 4 balls each of No. 48 Hunter's Green and No. 12 Black and a few yards of No. 126 Spanish Red and No. 1 White.

Milwards Steel Crochet Hook No. 7.

An 8-inch square of green felt.

A bone ring.

Starting at A on chart with Hunter's Green, ch 70. 1st row: Sc in 2nd ch

from hook and in next 7 ch, insert hook in next ch, draw loop through, \* drop Green, pick up Black, draw through remaining loops on hook, thus changing color (always change color in this manner); working over unused color, make sc in next 5 ch, drop Black, pick up Green and sc in next ch, drop Green, pick up Black, sc in next 5 ch, drop Black, pick up Green, sc in next 9 ch. Repeat from \* across. Ch 1, turn. Starting with 2nd row follow chart to C. Repeat chart from A to C 2 more times, then follow chart from B back to A. Break off.

Embroider White cross bars in chain st through center of each Green section and Spanish Red cross bars through each Black section. Cut felt lining slightly larger than pot holder. Pink around edges and sew in place. With Green, sc closely around bone ring. Join and break off. Sew to corner.

## Tartan . . . S-91

### MATERIALS:

J. & P. Coats "Knit-Cro-Sheen," Art. A.64, 1 ball each of No. 48 Hunter's Green and No. 126 Spanish Red and a few yards of No. 43 Dk. Yellow and No. 1 White; or

Clark's O.N.T. Mercerized Bedspread Cotton, Art. B.504, colors of your own choice; or

J. & P. Coats or Clark's O.N.T. Pearl Cotton, Art. A. or B.19, Size 5, 4 balls each of No. 48 Hunter's Green and No. 126 Spanish Red and a few yards of No. 43 Dk. Yellow and No. 1 White.

Milwards Steel Crochet Hook No. 7.

An 8-inch square of red felt.

A bone ring.

Starting at A on chart with Hunter's Green, ch 73. 1st row: Sc in 2nd ch from hook and in each ch across. Ch 1, turn. 2nd, 3rd and 4th rows: Sc in each sc across. Ch 1, turn. 5th row: Sc in first 3 sc, insert hook in next sc, draw loop through, drop Green, attach Spanish Red, draw through remaining 2 loops on hook, thus changing color (always change color in this manner); working over unused color, \* sc in next sc, drop Red, pick up Green, sc in next sc, drop Green, pick up Red, sc in next 9 sc, drop Red, pick up Green, sc in next sc, drop Green, pick up Red, sc in next sc, drop Red, pick up Green, sc in next 4 sc, drop Green, pick up Red. Repeat from \* across, ending with 4 Green sc. Ch 1, turn. Starting with 6th row follow chart to B. Repeat chart from A to B once more, then repeat first 4 rows. Break off.

Embroider White cross lines in chain st through center of each Red section. Cut red felt 1/4 inch larger than pot holder. Pink around edges and sew in place. With Red sc closely around bone ring. Join and break off. Sew to corner.

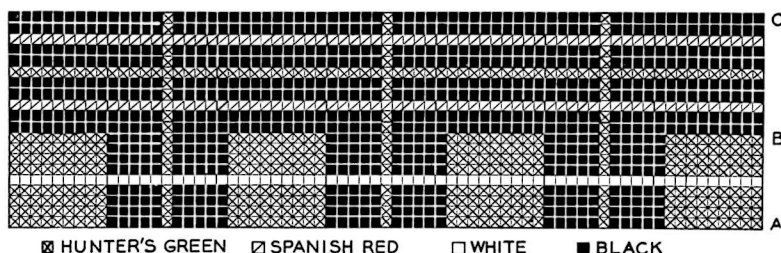


Chart for Tartan Pot Holder S-89

Chart for Tartan Pot Holder S-91

