

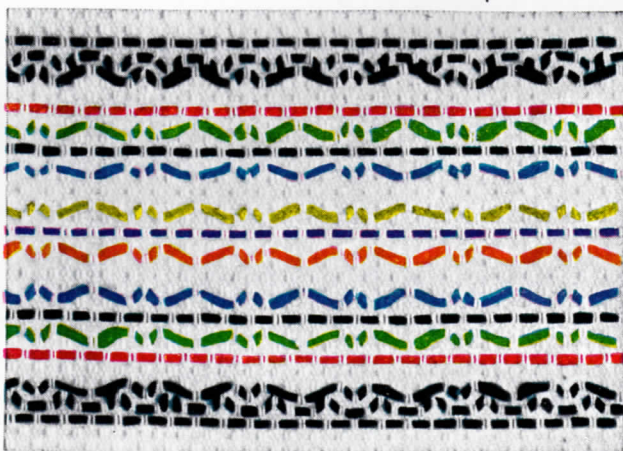


1 Skein ea. Lt. Emerald, Orange, Heliotrope.

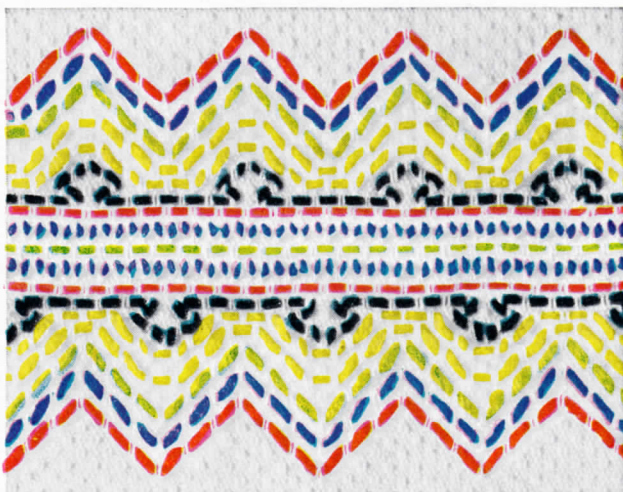


1 Skein ea. Bright Red and Black.

## SWEDISH *Embroidery*



1 Skein ea. Black, Bright Red, Lt. Emerald, Marine Blue, Chartreuse or Spring Green, Heliotrope, Dk. Orange.



1 Skein ea. Dk. Orange, Marine Blue, Chartreuse or Spring Green, Yellow and Black.

### GENERAL DIRECTIONS FOR SWEDISH EMBROIDERY:

Embroidery is worked on wrong side of towel. Fold the width of towel in half to get the center 2 vertical threads of towel. With "STAR" Embroidery Cotton start design at center 2 threads of towel, allowing  $\frac{1}{2}$  length of embroidery cotton to work each side of 1st row. Follow the illustrations carefully so the pattern will come out even on each side. Always pick up set of 2 threads of towel for weaving.

Use any of the AMERICAN THREAD COMPANY Products listed below for Swedish Embroidery. 1 skein of each color illustrated is needed.



STAR SIX STRAND EMBROIDERY COTTON Article 50



STAR PEARL TWIST Article 88



STAR RAYON Article 300