

Fig. 4 (See Fig. 5)

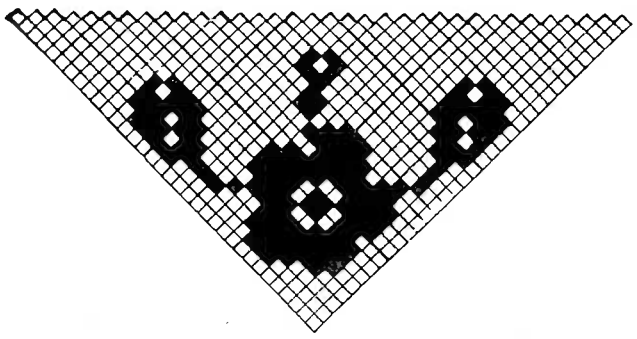


Fig. 5

FIG. 3—LUNCHEON CLOTH
WITH NAPKIN TO MATCH
(See Fig. 6)

Use No. 50 thread for this luncheon set. The general size of a luncheon set is from 36 to 38 inches, finished, and the napkins not any larger than 12 or 14 inches.

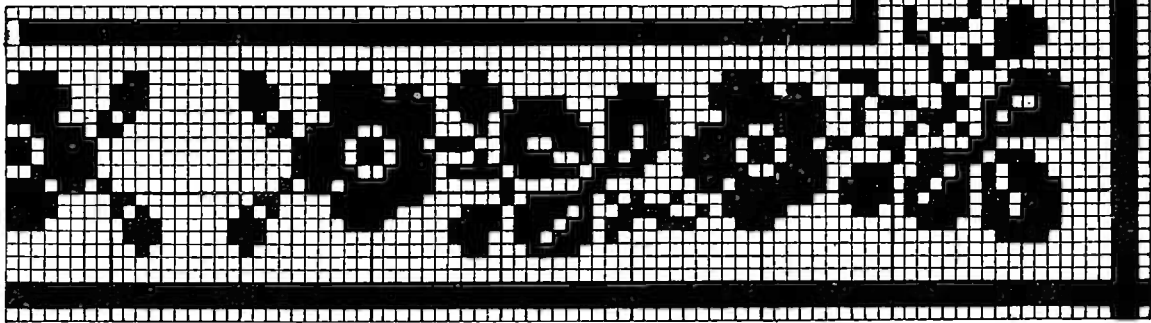
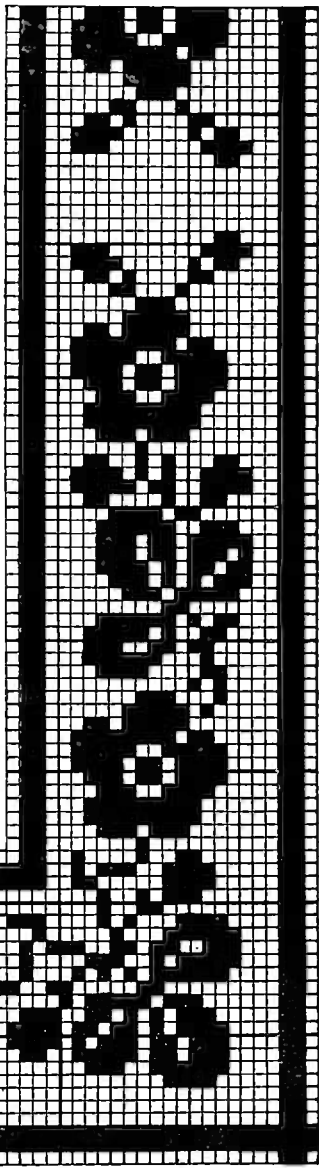


Fig. 6