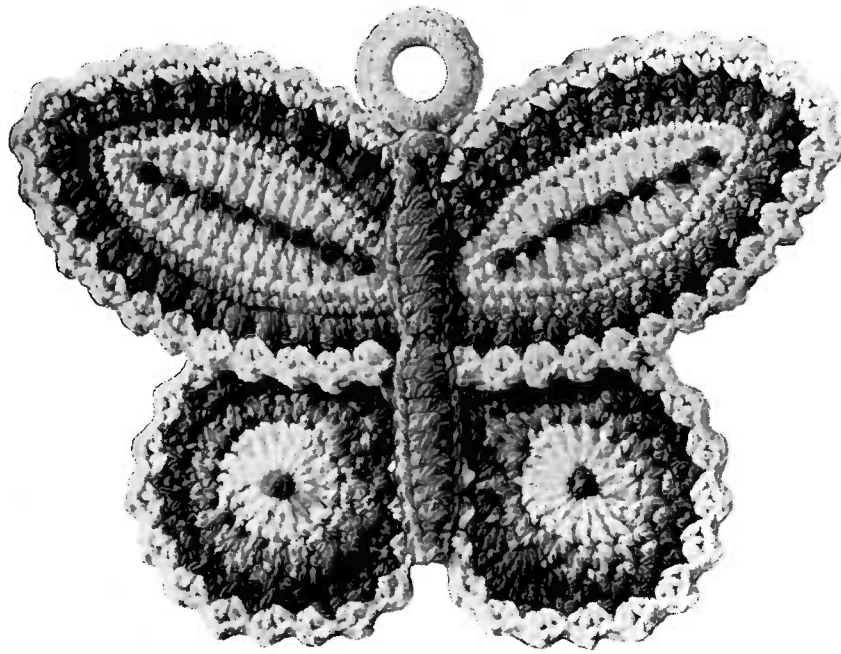




Butterfly



Potholder No. 13

MATERIALS REQUIRED:

Art. 600 Lily Cotton Yarn Skeins or

Art. 930 Sugar 'N Cream Yarn Balls:

Left over lengths of Yellow, Delft Blue and Red.

Crochet Hook No. 0.

TOP LEFT WING—With Yellow ch 16, 2 sc in 2d ch from hook, * sc in next ch, hdc in next 2 ch, 2 dc in next ch, dc in next 5 ch, 2 dc in next ch, hdc in next 2 ch, sc in next ch, * 3 sc in end ch. Repeat from * to * on other side of ch. Sc in next st, sl st in 1st sc. **ROW 2**—Ch 1, 2 sc in same sc, sc in each st around with 3 sc in center sc at other end. End with 1 sc in 1st corner, join with sl st in 1st sc. Fasten off. **ROW 3**—With Blue (sc in next 5 sc, 2 sc in next sc) twice, sc in next 7 sts, 3 sc in next st, (sc in next 5 sc, 2 sc in next sc) twice, sc in next 8 sc. **ROW 4**—Ch 1, turn, sc in each sc up to tip, 3 sc in center sc at tip, sc in each sc to 3d from end, sl st in next sc. Fasten off. **ROW 5**—Turn, sl st in Red in last sl st, (ch 1, sk 1 sc, a long sc over next sc) 10 times, inserting hook down between 2 Blue rows, ch 1, sk 1 sc, (a long sc, ch 2, a long sc) all in next (center) st at tip, (ch 1, sk 1 sc, a long sc in next st) 12 times. Fasten off. **ROW 6**—Join Yellow to 1st ch-1 sp, (sc, ch 2, sc) in each ch-1 sp around. Fasten off.

TOP RIGHT WING—Repeat Rows 1 and 2, then turn and repeat Rows

3 and 4. **ROW 5**—With Red make a long sc over 1st sc in last row, (ch 1, sk 1 sc, a long sc in next sc) 11 times, ch 1, sk 1 sc, (a long sc, ch 2, a long sc) in next (center) st, (ch 1, sk 1 sc, a long sc in next sc) 10 times, ch 1, sk 1 st, sl st in next st. Fasten off. Repeat Row 6. With Red make a row of 8 French Knots along center of Row 1 of each wing. Sew wings tog.

LOWER LEFT WING—With Yellow ch 6, join with sl st to form ring. **ROW 1**—Ch 3, 17 dc in ring, join with sl st in ch-3. Fasten off. **ROW 2**—Sc in Blue in 1 dc, (hdc, 2 dc and hdc) all in next dc, sc in next dc, (sc, ch 2, sc) in each of next 13 dc, sc in next 2 dc, join to 1st sc. Fasten off. **ROW 3**—Sc in Red in next 2 sts, 3 sc in next st, sc in next 2 sts, 2 sc in next shell, (sc, hdc, dc) in next shell, 4 dc in next shell, dc and hdc in next shell, (sc, ch 2, sc) in each of next 9 shells, sc in next 3 sc. Fasten off. **ROW 4**—3 sc in Yellow in center sc at next corner, (sk 1 st, a sc, ch 2, sc shell

in next st) 7 times, a shell in each of next 9 shells, (sk 1 sc, a shell in next sc) 3 times. Join. Fasten off.

LOWER RIGHT WING — Repeat Row 1, turn and repeat Rows 2 and 3. **ROW 4**—Mark center sc at next corner, turn and make 3 sc in marked st in Yellow, (sk 1 st, a sc, ch 2, sc shell in next st) 3 times, a shell in each of next 9 shells, (sk 1 st, a shell in next st) 7 times. Join and fasten off. Make a Red French Knot in center of each Lower Wing. Sew wings tog.

BODY—With Blue ch 24, 3 sc and 1 sl st in 2d ch from hook, sc in next ch, hdc in next ch, dc in next 6 ch, hdc in next ch, sc in next ch, hdc in next ch, dc in next 8 ch, hdc in next ch, sc in next 2 ch. Fasten off. Sew Wings tog, lapping Top Wings over Lower Wings. Sew Body between Wings. Cover a bone ring with Yellow sc and sew to top of Head and each Top Wing. Steam and press holder dry on back thru a cloth. Line back with cloth.