

EMBLEMS

Picture No. 2

Use these reproductions of national emblems, on a VICTORY "V" rack for kitchen decoration, as well as useful Hot Pot Holders. The top of the shield is cross stitched on the crocheted background.

Four small bone rings and 2 smallest size cup hooks will be needed.

SHIELD: Top—With White, ch 31, 30 sc on chain. (Ch 1, turn, 30 sc) 6 times. Fasten off. With Blue, make sc around edge, putting 3 sc in each corner. Fasten off.

With Blue—single strand—in a dull-pointed needle, make cross st on second st of top White row and in every second st across.

In Row 2, make a cross st in first st and in every other st across. Continue, alternating cross sts, until 7 rows are covered.

BASE: With Red, ch 11, 10 sc on ch, ch 1, turn, 2 sc in last sc, sc in 9 sc. Draw White through the 2 loops of final sc, drop Red, but do not cut, ch 3, turn, and working over starting end of White, make dc in last 10 sc, 3 dc in end sc, ch 4, turn, 3 dc in last dc, dc in next 12. Draw up Red through last 2 loops of final dc, drop White but do not cut, ch 1, turn, sc in 15 dc, sc in end 4-ch, ch 1, turn, 2 sc in last sc, sc in 15 sc.

Draw up White and join, ch 3, turn, dc in last 16 sc, 3 dc in end sc, ch 4, turn, 2 dc in last dc, dc in 18 dc.

Join Red, ch 1, turn, sc in last 20 dc, sc in end 4-ch, ch 1, turn, sc in 21 sc.

Join White, ch 3, turn, dc in 18 sc, dc in next 3 sc, holding the last loop of each dc on hook, thread over and pull through all loops at once (a cluster), ch 4, turn, (dc in cluster and in next 2 dc) made into a cluster, dc in 16 dc.

Join Red, ch 1, turn, sc in 17 dc, ch 1, turn, skip last sc, sc in 16 sc.

Join White, ch 3, turn, dc in 12 sc, (dc in 4 sc) made into a cluster, ch 4, turn, (dc in cluster and in next 2 dc) made into a cluster, dc in 10 dc.

Join Red, fasten off White, ch 1, turn, sc in 11 dc, ch 1, turn, skip last sc, sc in 10 sc. Fasten off.

Lap edge of Top over Base and sew together.

EAGLE: With White, ch 30, 29 sc on chain. (Ch 1, turn, 29 sc) 18 times (total of 19 rows). Ch 1, turn, skip last sc, sc in each sc to second from end, sl st in end sc. (Ch 2, turn, skip sl st and last sc, sc in each sc to second from end, sl st in end) 10 times.

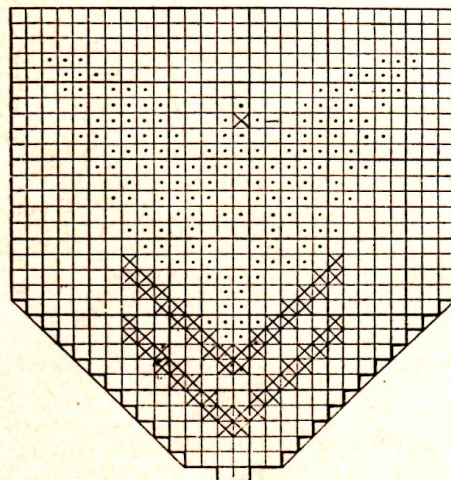
Ch 2, turn, skip sl st and last sc, sl st in next sc, sc in next 3 sc, sl st in next. Fasten off.

Join Red to top corner, (ch 1, sl st in next second st) repeated around. Fasten off.

Following diagram, embroider eagle in cross st, using yarn threaded to a dull-pointed needle. With Red, make a short st for beak and a French knot for eye, then work the chevrons in Red.

"V" RACK: With White, ch 31, 30 sc on chain. (Ch 1, turn, 30 sc) 9 times. Fasten off. Following diagram, embroider "V" in cross st.

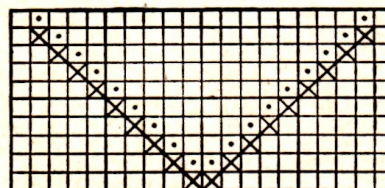
Steam and press 3 pieces on back. Pad holders with flannel, then line. Sew bone ring to center-top of each. Line Rack with muslin, leave one end open. Cut a heavy piece of cardboard (or 2 of lighter weight) to fit; slip inside, between crocheted rack and muslin, and sew end to close. Screw cup hooks $\frac{3}{4}$ -inch from each end into and through crochet and cardboard, and sew rings to top of Rack, directly above hooks.



These charts show:
Embroidery detail for
Emblem Holders.

X in Red

• in Blue



Charts for National Emblem Holders.