

Directions for working the pattern of Plate I:

Ground of wide and narrow stripes for curtains and window-blinds, worked on Double tammy cloth,
in Pearl cotton D.M.C (Coton perlé) N°3 and Knotting
cotton D.M.C (Fil à pointer) N°s 10 and 20.
See explanatory details, figs. 10, 15 and 18.)

Count 9 horizontal threads for the single rows and 15 for the double rows of scallops in flat stitch embroidered with Pearl cotton D.M.C. N° 3.

Draw out 10 horizontal threads in the big border for the narrow insertions, 28 for the wide one and 16 for the insertion in the narrow border.

The interverted clusters consist of three threads of the stuff. The thread that is run through the wide insertions is a cord of two threads of Knotting cotton D.M.C N° 10, twisted together, the one that runs through the narrow insertions is a cord made of two threads of Knotting cotton D.M.C N° 20.

DRAWN THREAD WORK

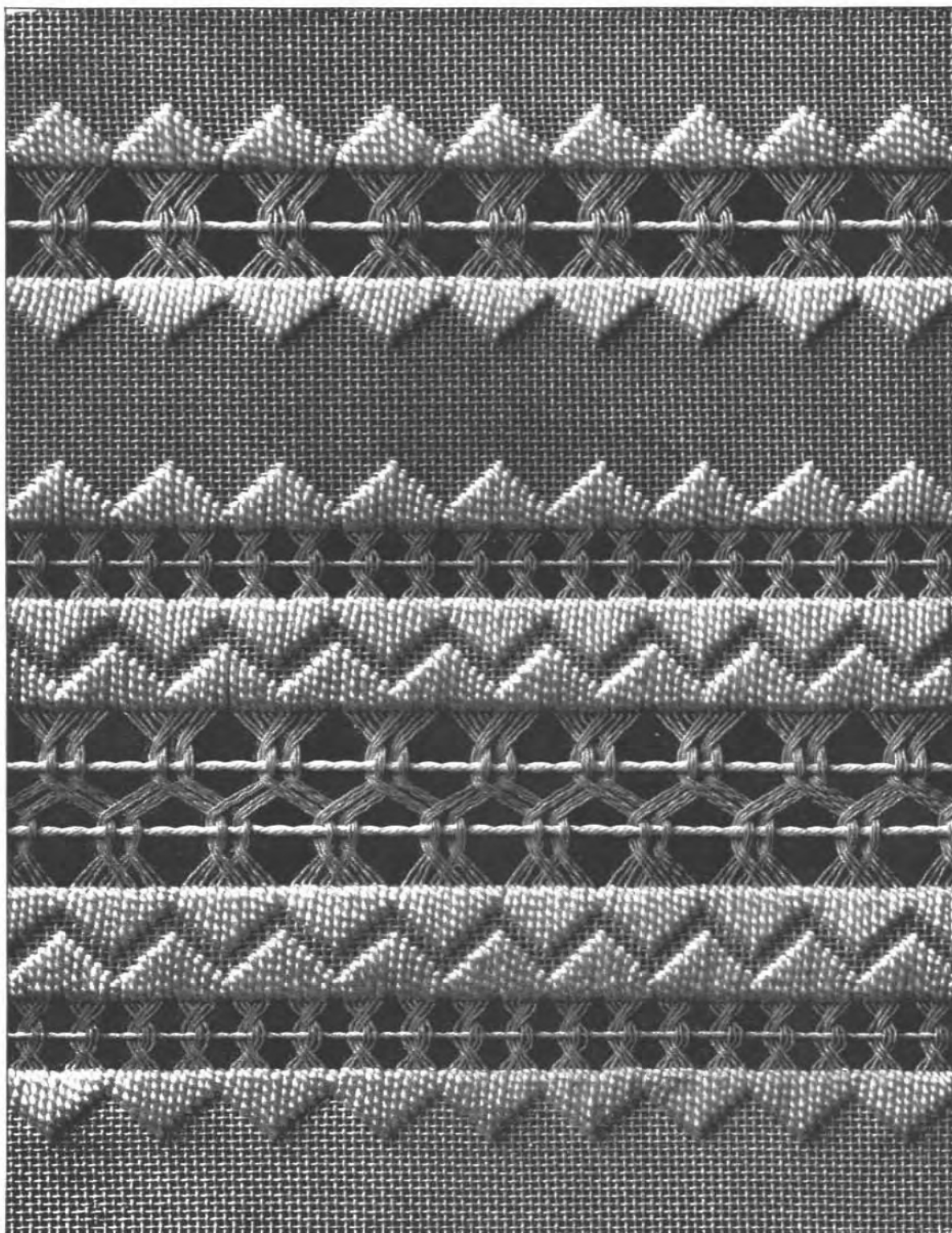


Plate I

Directions for working the patterns of Plate VI:

Four braids for articles of dress worked on Java braids.
with Pearl cotton D.M.C (Coton perlé) N° 3 and Crochet cotton
D.M.C special quality (Cordonnet spécial) N° 3.
(See explanatory details, figs. 5, 6, 7, 10, 22, 27, 31, 37 and 38.)

First braid — width 14 threads — Draw out 8 threads in the middle, make the two rows of crossed stitching over 2 threads of the braid.

Second braid — width 16 threads — Draw out 10 threads in the middle, make the two rows of strengthening stitches that form the clusters over 2 horizontal and 2 vertical stitches.

Third braid — width 20 threads — Draw out 18 threads in the middle, make the two rows of four-sided stitches over 3 horizontal and 2 vertical threads.

Fourth braid — width 38 threads — Draw out 18 threads in the middle, leave 3 threads each side, then draw out, top and bottom, 3 threads more; the crossed stitches are done over 2 vertical and 3 horizontal threads.

Use Pearl cotton D.M.C N° 3 for all the embroidered rows and for the parts worked in darning stitch, and Crochet cotton D.M.C special quality N° 3 for the lace stitches.

DRAWN THREAD WORK

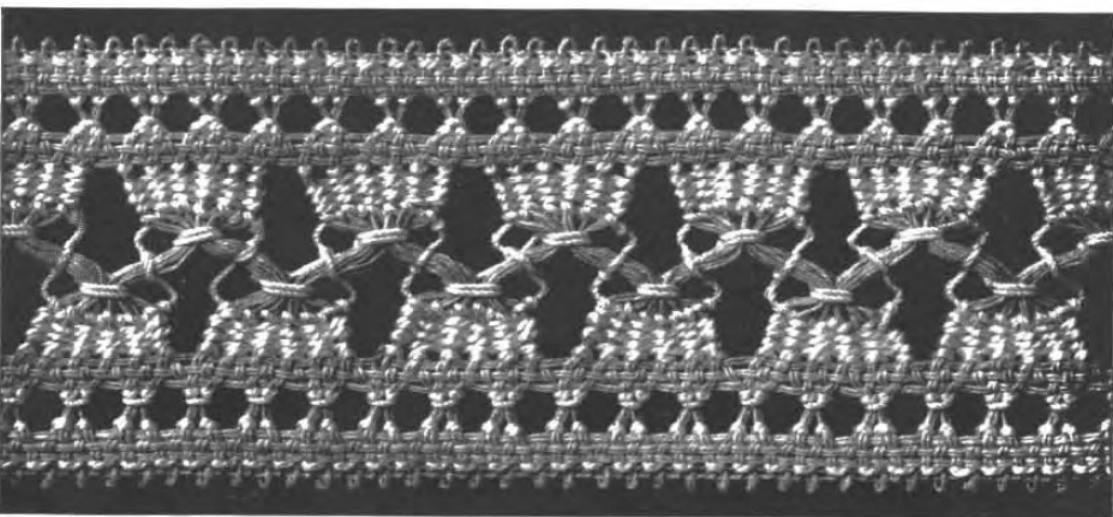
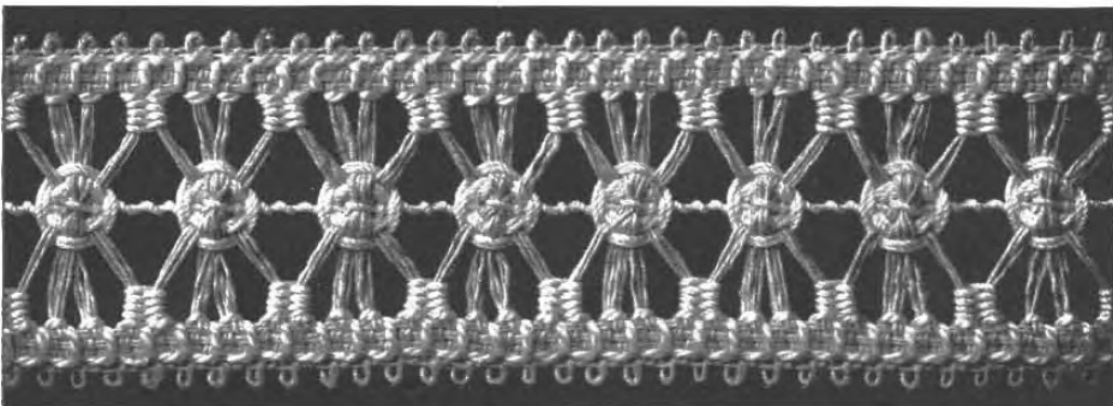
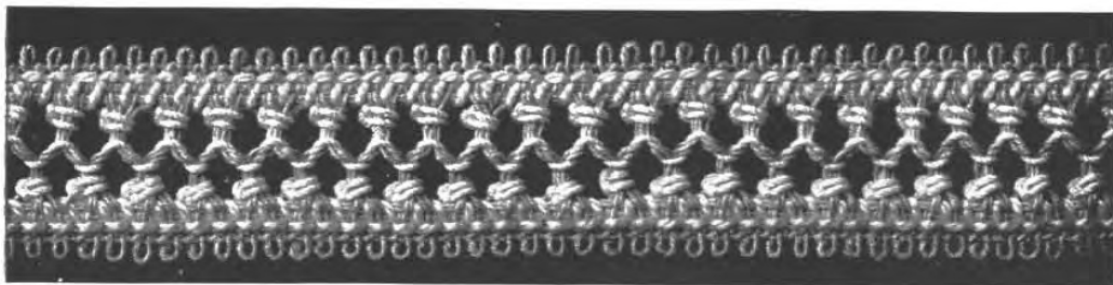
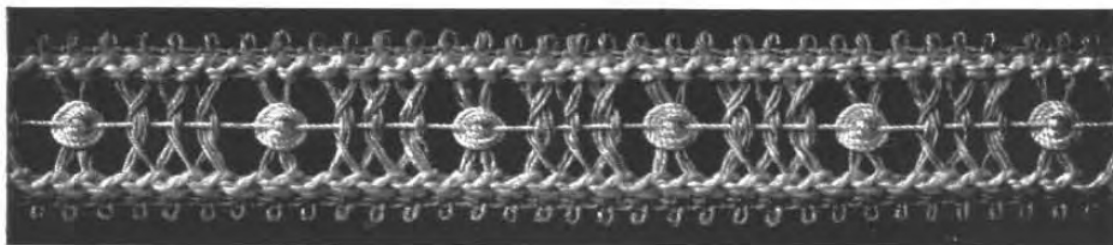


Plate VI